

Intel® Solid State Drive Firmware Update Tool

Enable/Disable DevSleep Only

User Guide
Software Version 2.0.15



Revision History

Date	Revision	Description
September 2015	001	<ul style="list-style-type: none">Initial Release
October 2015	002	<ul style="list-style-type: none">Added support for the Intel® SSD Pro 2500 Series

Tests document performance of components on a particular test, in specific systems. Differences in hardware, software, or configuration will affect actual performance. Consult other sources of information to evaluate performance as you consider your purchase. For more complete information about performance and benchmark results, visit <http://www.intel.com/performance>.

Intel does not control or audit the design or implementation of third party benchmark data or Web sites referenced in this document. Intel encourages all of its customers to visit the referenced Web sites or others where similar performance benchmark data are reported and confirm whether the referenced benchmark data are accurate and reflect performance of systems available for purchase.

Results have been estimated or simulated using internal Intel analysis or architecture simulation or modeling, and provided to you for informational purposes. Any differences in your system hardware, software or configuration may affect your actual performance.

Intel technologies' features and benefits depend on system configuration and may require enabled hardware, software or service activation. Performance varies depending on system configuration. No computer system can be absolutely secure. Check with your system manufacturer or retailer or learn more at www.intel.com.

Intel disclaims all express and implied warranties, including without limitation, the implied warranties of merchantability, fitness for a particular purpose, and non-infringement, as well as any warranty arising from course of performance, course of dealing, or usage in trade.

Intel may make changes to specifications and product descriptions at any time, without notice. Designers must not rely on the absence or characteristics of any features or instructions marked "reserved" or "undefined." Intel reserves these for future definition and shall have no responsibility whatsoever for conflicts or incompatibilities arising from future changes to them.

The information here is subject to change without notice. Do not finalize a design with this information.

The products described in this document may contain design defects or errors known as errata which may cause the product to deviate from published specifications.

Contact your local Intel sales office or your distributor to obtain the latest specifications and before placing your product order.

Copies of documents which have an order number and are referenced in this document, or other Intel literature, may be obtained by calling 1-800-548-4725, or go to: <http://www.intel.com/design/literature.htm>

Intel and the Intel logo are trademarks of Intel Corporation in the U.S. and other countries.

*Other names and brands may be claimed as the property of others.

Copyright © 2015 Intel Corporation. All rights reserved.



Contents

1.0	Glossary	4
2.0	Overview.....	5
2.1	System Requirements	5
2.2	Known Issues.....	6
2.2.1	Can't Run Intel® SSD Firmware Update Tool on an HP* Envy* Touchsmart* Ultrabook with Secure Boot Enabled	6
2.2.2	Can't Run Intel® SSD Firmware Update Tool on a Dell* Inspiron* Ultrabook 15z with Secure Boot Enabled	6
3.0	Windows* 7/8/10 Instructions.....	7
3.1	Perform the Setup.....	7
3.2	Option 1: Download the Intel® SSD Firmware Update Tool to Blank CD.....	8
3.3	Option 2: Download the Intel® SSD Firmware Update Tool to USB Flash Drive.....	9
3.4	Run the Intel® SSD Firmware Update Tool.....	10
4.0	Apple* Macintosh* Instructions.....	17
4.1	Perform the Setup.....	17
4.2	Download the Intel® SSD Firmware Update Tool to Blank CD.....	17
4.3	Start the Firmware Update Process	19
5.0	Additional Information – Burning the ISO Image in Windows* XP, Windows* Vista* or Linux* OS	20
6.0	Troubleshooting	21
6.1	Computer Does Not Recognize ISO Images	21



1.0 Glossary

Table 1. Terms and Acronyms

Term	Description
ATA	Advanced Technology Attachment
DevSleep	Device Sleep
FUT	Intel® SSD Firmware Update Tool
ISO	International Organization for Standardization
ISO image	An archive file or disk image of an optical disk that uses the ISO format. Typically, the file has an .ISO extension; however, Apple Mac OS* ISO images often use a .CDR extension.
OS	Operating System
RAID	Redundant Array of Independent Disks (formerly Redundant Array of Inexpensive Disks)
SATA	Serial ATA
SSD	Solid State Drive



2.0 Overview

This document describes how to use the Intel® SSD Firmware Update Tool (FUT) to update the firmware enabling or disabling DevSleep on the below listed Intel® Solid State Drives (Intel® SSDs) in all capacities.

- Intel® Solid State Drive 530 Series
- Intel® Solid State Drive 535 Series
- Intel® Solid State Drive Pro 2500 Series

NOTE: The Intel® SSD Firmware Update Tool recognizes all Intel SATA SSDs, but if the unit attached to the system is not a specific model, the tool does not provide any functionality.

For Microsoft Windows* operating systems, follow the firmware update instructions in Section 3, "[Microsoft Windows* Instructions](#)".

For Apple Mac OS* systems, follow the instructions in Section 4, "[Apple Macintosh* Instructions](#)".

The firmware update process involves three steps:

1. Perform the setup

Prior to updating the SSD firmware, perform such activities as backing up your data and closing all other applications.

2. Download the Intel® SSD Firmware Update Tool to a USB Flash Drive or blank CD (CD-R or CD-RW)

The tool is a self-contained firmware update package formatted as an ISO image, which must be downloaded and burned on a USB flash drive (Windows* and Linux* only) or blank CD-R.

3. Run the Intel® SSD Firmware Update Tool

When installed into a host system, the CD boots its own custom Linux-based environment and runs the necessary firmware update software to modify your Intel SSD.

2.1 System Requirements

To use the Intel® SSD Firmware Update Tool, you need the following items:

- Supported Intel SSD
- Host system with an available USB port (Windows and Linux only) or a Read/Writable (R/W) CD-ROM drive
- ISO image burning software usually provided with the R/W CD-ROM drive, or freely available online
- Blank USB Flash Drive (Windows and Linux only) or blank CD (CD-R or CD-RW)
- A charged battery, if the update occurs on a mobile system



2.2 Known Issues

2.2.1 Can't Run Intel® SSD Firmware Update Tool on an HP* Envy* Touchsmart* Ultrabook with Secure Boot Enabled

In order to run the Intel® SSD Firmware Update Tool on an HP Envy Touchsmart Ultrabook, you will first need to disable the Secure Boot feature using the following procedure:

1. Enter the **BIOS** by pressing the **F10** key while powering up the system
2. Go to **System Configuration**
3. Select **Boot Options**
4. **Legacy Support** is **Disabled** by default
5. Enable Legacy Support.
6. Answer **YES** to the question. Changing this setting may make the system unable to boot.
7. Modify the Legacy boot order. Set **USB Diskette on key/USB hardDisk** as **First Boot** using the **F6** Key
8. Press **F10** to save and exit the BIOS
9. After you are finished with Intel® SSD Firmware Update Tool you can reset BIOS to the Default values

2.2.2 Can't Run Intel® SSD Firmware Update Tool on a Dell* Inspiron* Ultrabook 15z with Secure Boot Enabled

In order to run the Intel® SSD Firmware Update Tool on a Dell Inspiron Ultrabook 15z, you will first need to disable the Secure Boot feature using the following procedure:

1. Enter the BIOS by pressing the **F2** key while powering up the system
2. Go to the **Boot** menu
3. Go to the **Secure Boot** option
4. Select **Disabled**
5. Exit Save Changes and reset
6. Answer **Yes** to Save configuration and reset question
7. After using Intel® SSD Firmware Update Tool return to the BIOS
8. Reset **Secure Boot** to **Enabled**
9. Save and exit



3.0 Windows* 7/8/10 Instructions

3.1 Perform the Setup

Complete the following steps before starting the firmware update process on the PC containing the SSD.

1. Back Up the SSD

Perform a complete system backup on your Intel SSD to ensure that no data is lost during the firmware update process. Intel is not responsible for any data loss that might occur during or after a firmware update on an SSD.

Following a successful firmware update, data restoration should not be required.

2. Plug in the Power

For mobile PCs, ensure the computer battery is fully charged. For desktop PCs, ensure the system is plugged into AC power during the update process. Do not remove power at any time during the firmware update process as this could produce incomplete results and may render your Intel SSD unusable.

3. Turn Off Drive Password Protection

Some systems provide the ability to password-protect their drives. If your system has password protection enabled, the Intel SSD may reject any requests from the host to update the firmware. You may need to turn off the drive password protection prior to beginning the firmware update process.

Although it varies from system to system, you can usually find the Drive Password Protection feature located in the BIOS. Consult your system documentation for the BIOS settings and passwords.

If you need help disabling the drive password protection feature, contact Intel Customer Support: <http://www.intel.com/go/ssdsupport>

4. Check the Boot Order

This procedure requires booting from a USB flash or CD-ROM drive before the system drive. To determine the boot order for your system, reboot and enter BIOS Setup. Depending on the BIOS vendor, look for a parameter named **Boot Device Priority** or **Boot Load Order**. Ensure that the system boots the USB flash, or CD-ROM drive before the drive that contains the operating system (OS).

For more information on how to set the CD-ROM drive boot order, consult the system documentation for your PC.

If you still need additional assistance checking the boot order, contact Intel Customer Support: <http://www.intel.com/go/ssdsupport>

5. Close Applications

Before beginning the firmware download process, close all applications except for your Internet browser.




3.2 Option 1: Download the Intel® SSD Firmware Update Tool to Blank CD

The Intel® SSD Firmware Update Tool is packaged as an ISO image. Similar to an archive file or a disk image, an ISO image is specifically designed for optical disks like CDs in a format specified by the International Organization for Standardization (ISO).

You cannot simply copy an ISO image to a blank CD. (It will appear as a data file and will not work correctly.) The ISO image must be decoded with software and installed onto a blank CD (CD-R or CD-RW).

1. Your Intel Customer Support Representative will provide you the ISO of the tool.
2. Follow the steps for your operating system to burn the ISO image to a blank CD-R or CD-RW.

Windows* 8/10

- a) Insert a blank CD into your drive
- b) Click **Save** to download the file
- c) Specify a folder location when prompted (such as c:\temp)
- d) Press the **Windows key**  on your keyboard to go to the desktop, then click the **File Explorer** icon on the taskbar
- e) Navigate to the file folder you specified in **step b**
- f) Right-click the .ISO file and select **Burn disc image**
- g) Click **Burn**. The ISO image is burned to the CD
- h) Click **Close** when finished

Windows* 7

- a) Insert a blank CD into your drive
- b) Click **Save** to download the file
- c) Specify a folder location when prompted (such as c:\temp)
- d) Open the Windows **Start** menu, open the **Computer** folder, and go to the file folder you specified in the previous step
- e) Right-click the .ISO file and select **Open With**
- f) Select **Windows Disk Image Burner**
- g) Click **Burn**. The ISO image is burned to the CD
- h) Click **Close** when finished

Windows XP and Windows Vista*

Your Read/Write CD-ROM drive software will guide you through the process of burning an ISO image. For more information, see Section 5.0, "Additional Information – Burning the ISO Image in Windows XP, Windows Vista or Linux OS."

If your R/W CD-ROM software does not recognize ISO images, you may see an "unknown file type" message when downloading the Intel® SSD Firmware Update Tool. See Section 6.1, "[Computer Does Not Recognize ISO Images](#)".



3.3 Option 2: Download the Intel® SSD Firmware Update Tool to USB Flash Drive

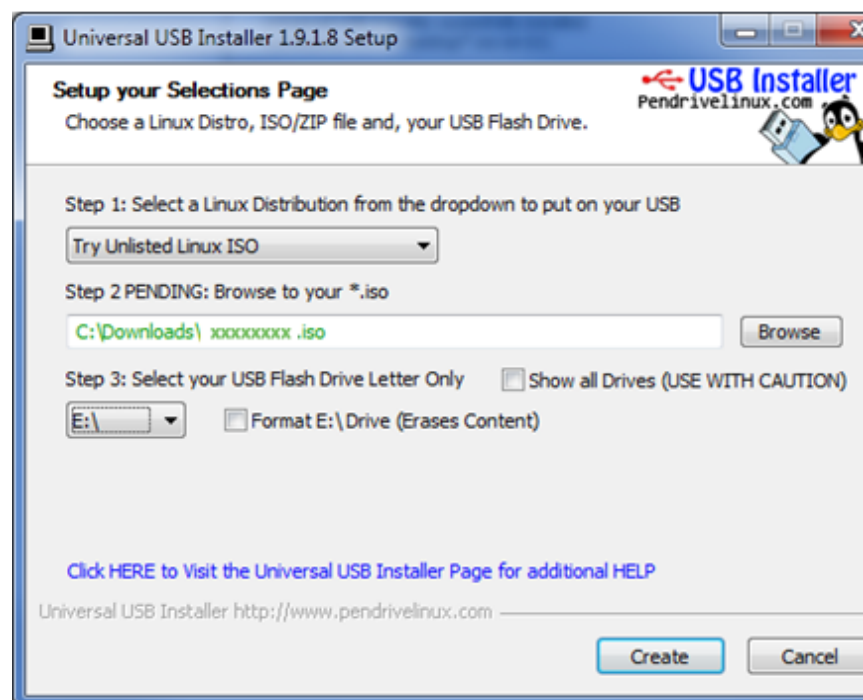
The Intel® SSD Firmware Update Tool is packaged as an ISO image. Similar to an archive file or a disk image, an ISO image is specifically designed for optical disks like CDs in a format specified by the International Organization for Standardization (ISO).

This means that you cannot simply copy an ISO image to a blank USB Flash Drive. (It will appear as a data file and will not work correctly.) The ISO image must be decoded with software and installed onto a blank USB Flash Drive to make it bootable with the Intel® SSD Firmware Update Tool.

For the purpose of illustration, we are using Universal USB installer software from pendrivelinux.com, but you may use any installer that you prefer.

1. Your Intel Customer Support Representative will provide you the ISO of the tool.
2. Go to <http://www.pendrivelinux.com/universal-usb-installer-easy-as-1-2-3/> and download the freeware Universal USB Installer
3. Install and run the Universal USB Installer (see **Figure 1**)
4. Select the **Try Unlisted Linux ISO**
5. Browse to the location of the Intel® SSD Firmware Update Tool **ISO** and select it
6. Select the drive letter that corresponds to your blank USB Flash Drive
7. Click **Create**

Figure 1. Universal USB Installer



NOTE: Your screen will display the name of the current firmware update image file (xxxxxxx.iso).



3.4 Run the Intel® SSD Firmware Update Tool

After creating the ISO image CD or bootable USB flash drive, make sure you have completed the setup procedures before running the Intel® SSD Firmware Update Tool:

- Back up the SSD
- Turn off Drive Password Protection
- Designate the CD-ROM or USB Flash drive (as appropriate) to boot first or prior to the OS drive
- Fully charge the battery (for mobile computers)
- Plug in the power cable (for desktop computers)

NOTE: If at any time during the firmware update process the program fails or your system displays a blank screen, power down and reboot your computer. Run the firmware update process again. If the second attempt fails, contact Intel Customer Support: <http://www.intel.com/go/ssdsupport>

1. Insert the CD containing the ISO image into the R/W CD-ROM drive, or the bootable USB flash drive into an available USB port
2. Click **Shutdown** from the Start menu to safely close down and power off the system
3. Wait for a count of 10 seconds once the system is completely powered off
4. Press the On button to boot the system from the CD-ROM or USB flash drive and automatically start the Intel® SSD Firmware Update Tool
5. Let the program run until it displays the License Agreement screen shown in Figure 2

**Figure 2. Initial Start Screen**

6. Click **Accept** to accept the license agreement and continue, or **Decline** to exit the tool without running it
7. The tool scans your system for Intel SSDs and displays information similar to that shown in Figure 3. If your system contains more than one Intel SSD, the tool displays each one it detects in a separate tab

NOTE: If the tool does not find an Intel SSD, the following information appears:

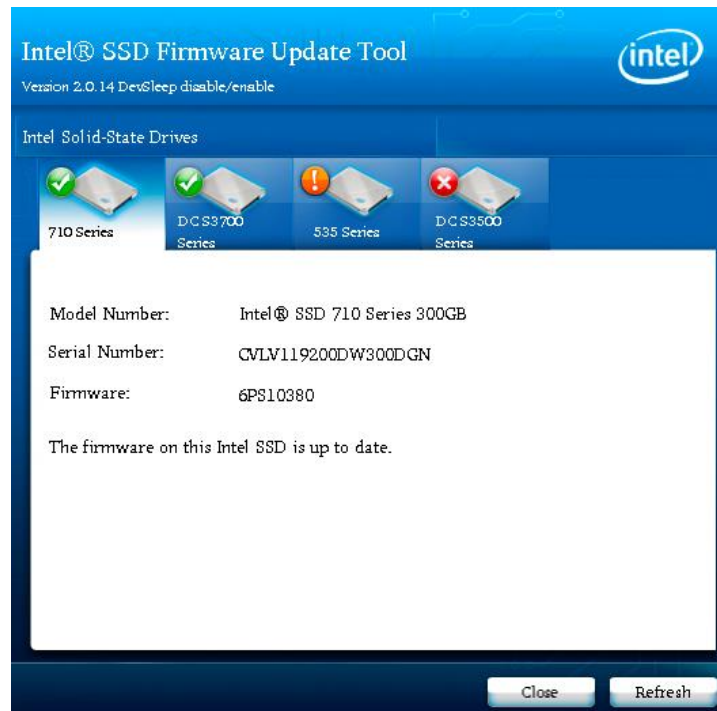




If you know an Intel SSD is installed and correctly connected to your system, please contact Intel Customer Support for further assistance at the following website:

<http://www.intel.com/go/ssdsupport>

Figure 3. Intel® SSD Firmware Update Tool Home Screen



Depending on how many Intel SSDs are detected, you will see one or more tabs displayed. If five or more drives are detected, there will also be arrow buttons to the left and right of the tabs that you can use to scroll through all detected drives.



Note the badge next to the drive picture on each tab.



A green badge with a check mark indicates that this Intel SSD has the latest firmware and does not need to be updated.



An orange badge with an Exclamation Point means that there is a firmware update available for this SSD.

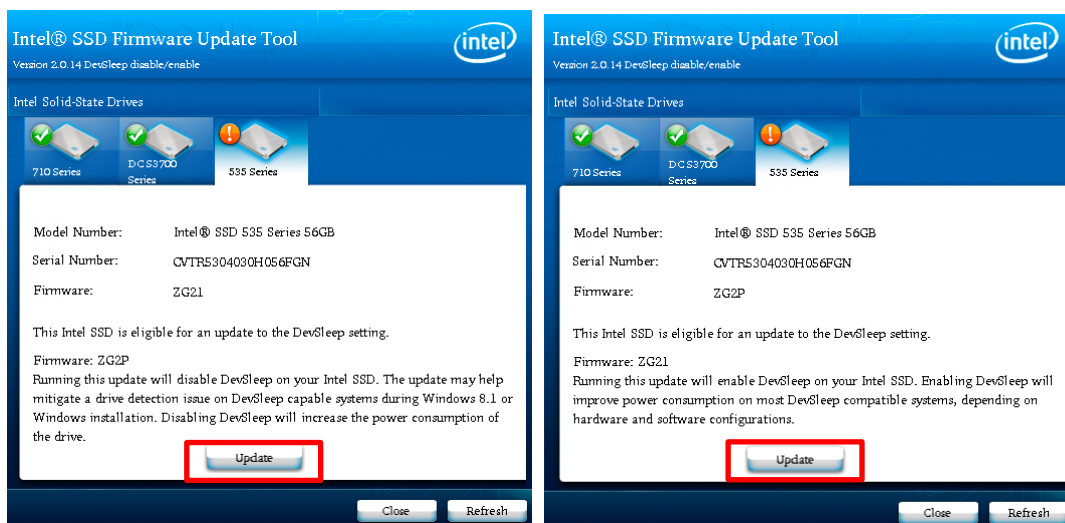


A red badge with an X indicates an issue will or has prevented the update. You will see a message on the drive's tab describing one of 4 possible conditions:

- 1) The SSD is security locked. In this case, please unlock the drive before attempting to update its firmware
- 2) This drive is running pre-production firmware. If this message is displayed, please contact Intel Customer Support at <http://www.intel.com/go/ssdsupport> for further assistance
- 3) Unsupported firmware. Please contact Intel Customer Support at <http://www.intel.com/go/ssdsupport> for further assistance
- 4) An attempt to update the firmware has failed. Please see details on a failed update later in this guide

8. To update a drive, click the appropriate tab and click the **Update** button (Figure 4)

Figure 4. Firmware Update Button

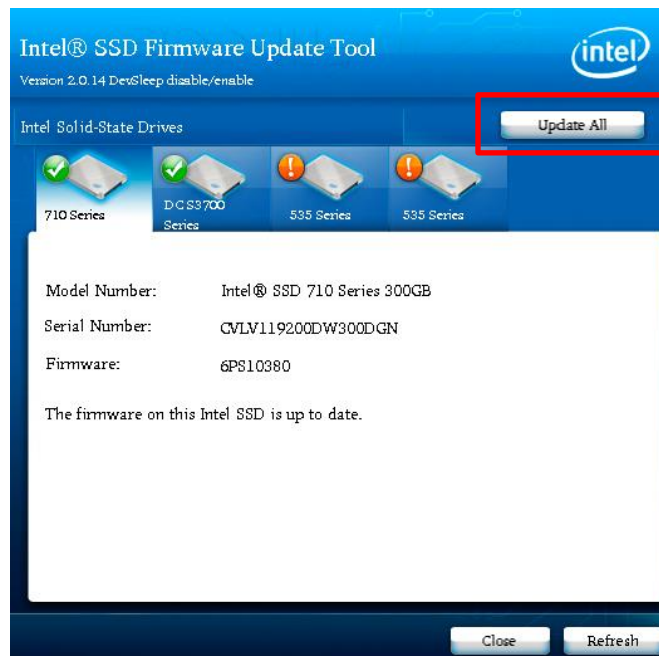


A) Disable DevSleep

B) Enable DevSleep

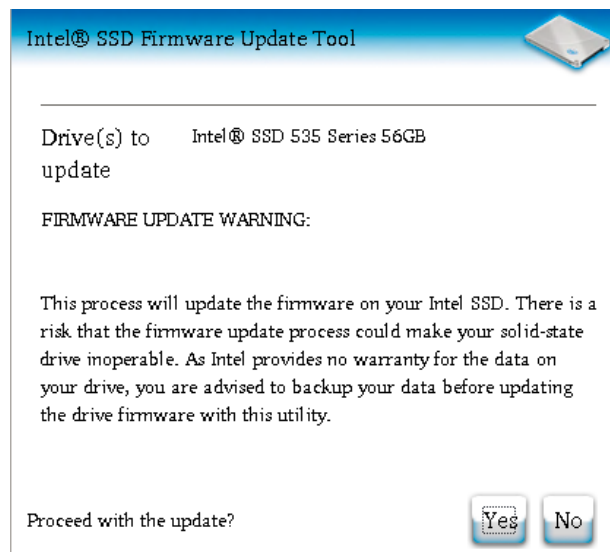
9. If more than one drive needs to be updated, you can also perform the update for all drives at once by clicking the **Update All** button (Figure 5)

Figure 5. Update All button



10. After pressing the Update or Update All button, the Warning Screen shown in Figure 6 will appear. Click **Yes** to proceed or **No** to cancel and exit without updating

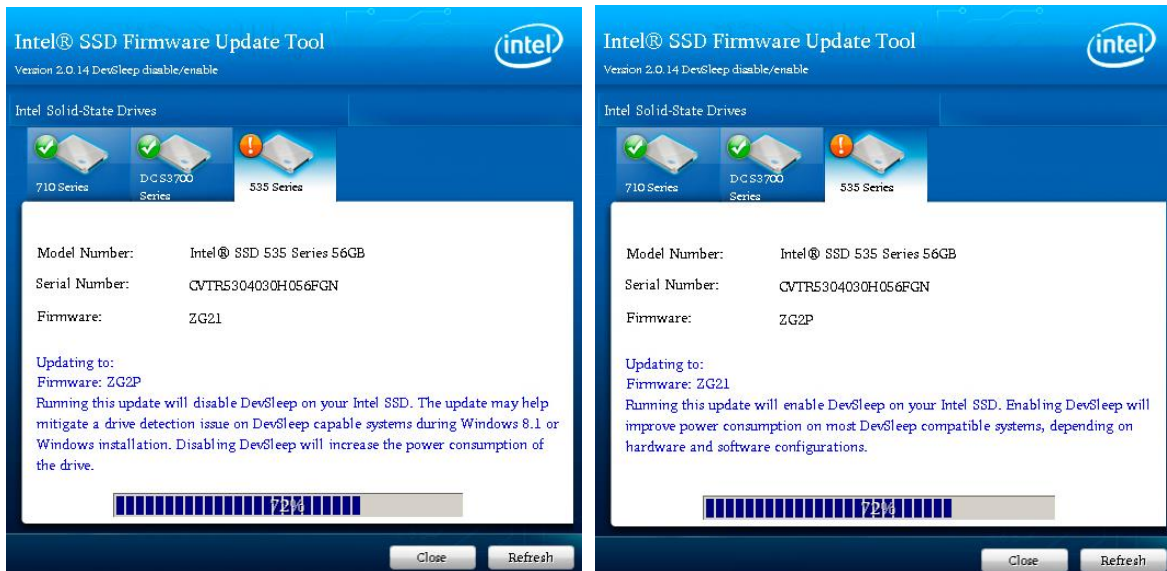
Figure 6. Firmware Update Warning Screen



11. It will take from 30 seconds up to 2 minutes to update the firmware on each SSD. Note the progress bar in Figure 7. **It is critical that you do not remove power or reboot your system** until the firmware update has completed. Doing so will produce unpredictable results and may render your SSD inoperable.



Figure 7. Firmware Update in Process



A) Disable DevSleep

B) Enable DevSleep



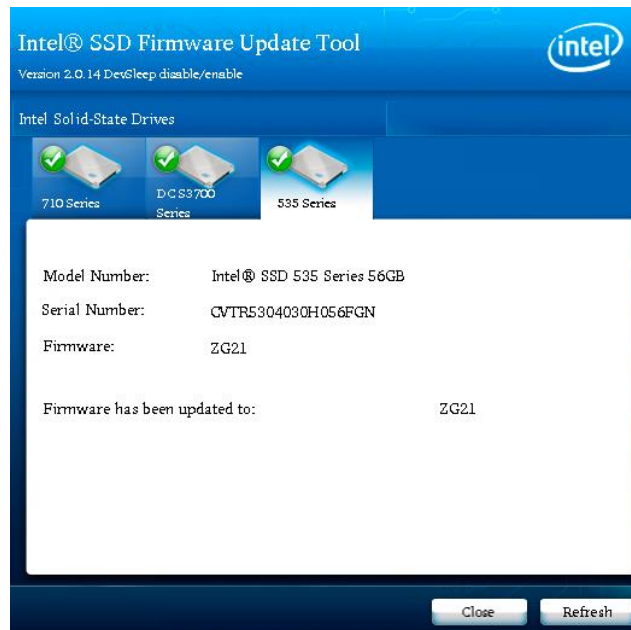
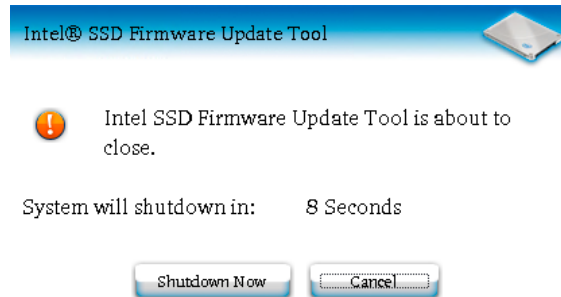
- Once the update is complete, the tool displays a screen similar to Figure 8. Note that the orange  badge has changed to a green  badge

Figure 8. Firmware Update Successful



Once you have finished updating firmware, you can click the **Close** button to exit the Intel® SSD Firmware Update Tool.

Figure 9. Intel® SSD Firmware Update Tool Shutdown Notice

Eject the CD or unplug USB flash drive with the Intel® SSD Firmware Update Tool, then click the **Shutdown Now** button to exit the Intel® SSD Firmware Update Tool and shut down your computer. Be sure to wait 10 seconds before starting your computer again.



If a firmware update fails for a drive, the badge will turn from the orange  badge to the red  badge, and you will see the error message in Figure 10:

Figure 10. Firmware Update Failure Message

13. The message indicates three steps you should take before attempting the update again:

- Disable the drive password in the computer's BIOS
- Enable SMART features in the computer's BIOS
- Enable legacy IDE mode in the computer's BIOS

If you are still unable to update the firmware after taking these steps, please contact Intel Customer Support at <http://www.intel.com/go/ssdsupport> for further assistance



4.0 Apple* Macintosh* Instructions

4.1 Perform the Setup

Complete the following steps before starting the firmware update process on the computer containing the SSD.

1. Back Up the SSD

Perform a complete system backup on your Intel SSD to ensure that no data is lost during the firmware update process. Intel is not responsible for any data loss that might occur during or after a firmware update on an SSD.

Following a successful firmware update, data restoration should not be required.

2. Plug In the Power

For mobile computers, ensure the computer battery is fully charged. For desktop computers, ensure the system is plugged into AC power during the update process. Do not remove power at any time during the firmware update process as this could produce incomplete results and may render your Intel SSD unusable.

3. Close Applications

Before beginning the firmware download process, close all applications except for your Internet browser.

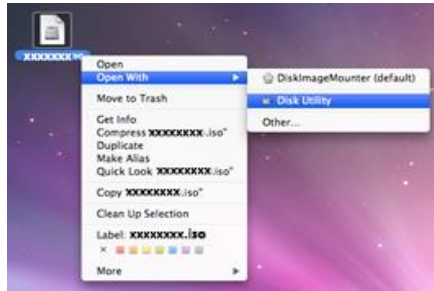
4.2 Download the Intel® SSD Firmware Update Tool to Blank CD

The Intel® SSD Firmware Update Tool is packaged as an ISO image. Similar to an archive file or a disk image, an ISO image is specifically designed for optical disks like CDs in a format specified by the International Organization for Standardization (ISO).

You cannot simply copy an ISO image to a blank CD. (It will appear as a data file and will not work correctly.) The ISO image must be decoded with software and installed onto a blank CD (CD-R or CD-RW).

1. Your Intel Customer Support Representative will provide you the ISO of the tool.
2. Right click the ISO image and open **Disk Utility**. See Figure 11.

Figure 11. Selecting Disk Utility

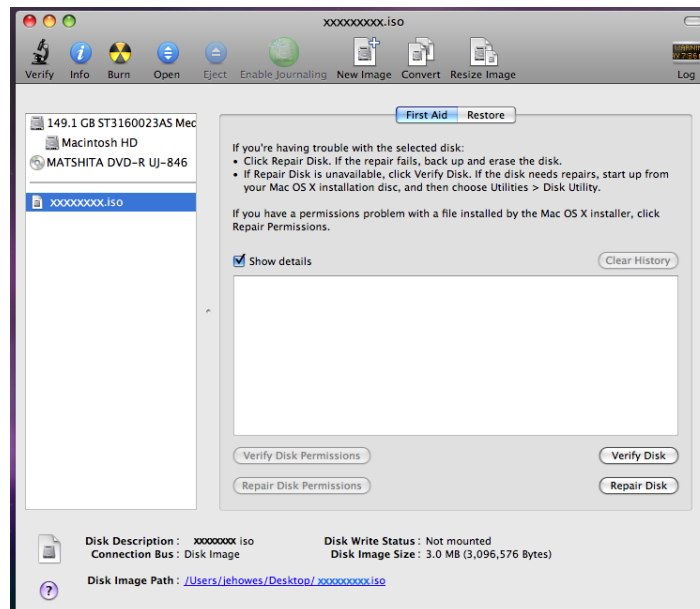


NOTES:

- These Apple* products were used only as examples to create this screen shot and do not imply any endorsement or warranty by Intel.
- Your screen will display the current name of the firmware update image file (xxxxxxxx.iso).

3. With the Disk Utility open, click the ISO image you downloaded.
4. Click the **Burn** button in the toolbar.

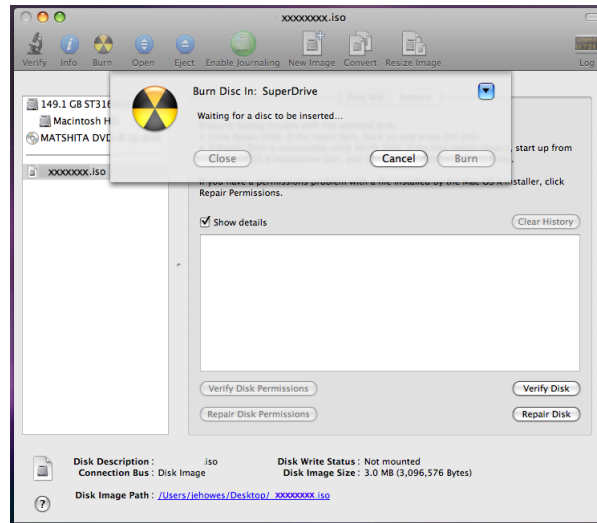
Figure 12. Using Disk Utility to Burn ISO Image



NOTE: Your screens will display the current name of the firmware update image file (xxxxxxxx.iso).

5. Install a blank CD (CD-R or CD-RW) when prompted.
6. Click the **Burn** button. The application displays a status screen similar to Figure 13.

Figure 13. Image Burning Process – Apple Mac OS*



NOTES:

1. The Apple* and Matsushita* products were used only as examples to create the screen shots on this page and do not imply any endorsement or warranty by Intel.
2. Your screen will display the current name of the firmware update image file (xxxxxxx.iso).

The process of burning a CD-ROM takes approximately five minutes.

4.3 Start the Firmware Update Process

After creating the ISO image CD, make sure you have completed the setup procedures before starting the firmware update process:

- Back up the SSD
- Fully charge the battery (for mobile computers)
- Plug in the power cable (for desktop computers)

Go to Section 3.4, "[Run the Intel SSD Firmware Update Tool](#)" and follow the steps to update the firmware.

Note: Hold down the "C" key to force your system to boot from the CD-ROM drive.

5.0 Additional Information – Burning the ISO Image in Windows* XP, Windows* Vista* or Linux* OS

This section describes how to burn the Intel® SSD Firmware Update Tool ISO image file on a blank CD (CD-R or CD-RW) using Microsoft Windows XP, Windows Vista, or Linux after you have downloaded the file (as described in [Section 3.2](#)).

Once the download process begins, you may see a screen similar to the one shown in Figure 14.

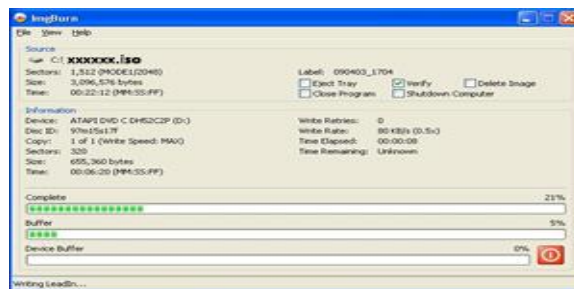
Figure 14. Burning an ISO Image



NOTE:

1. Your screens will display the current name of the firmware update image file (xxxxxxx.iso).
 1. Install a blank CD when prompted.
 2. Click the **Burn** button to start the process. A status screen similar to Figure 15 appears. The process of burning a CD-ROM takes approximately five minutes.

Figure 15. Image Burning Process



NOTES:

1. The ImgBurn* and ATAPI DVD* products displayed on this page were used only as examples to create these screen shots and do not imply any endorsement or warranty by Intel.
2. Your screens will display the current name of the firmware update image file (xxxxxxx.iso).

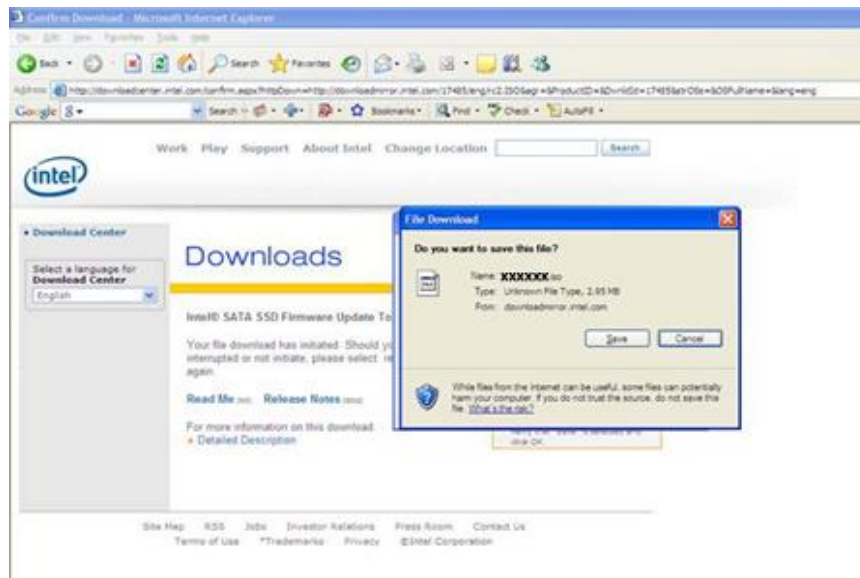


6.0 Troubleshooting

6.1 Computer Does Not Recognize ISO Images

If your CD-ROM software does not recognize ISO images (in Windows XP, Windows Vista, or Linux operating system), you may see an “unknown file type” message when downloading the Intel® SSD Firmware Update Tool similar to Figure 16.

Figure 16. R/W CD-ROM Software Does Not Recognize ISO Images



NOTE:

Your screens will display the current name of the firmware update image file (xxxxxxx.iso).

1. Click **Save** to download the ISO image to your computer.
2. Locate a software application on the Internet that burns ISO images. Install the application.
3. Double-click the ISO image on your drive to decode the image and burn the Intel® SSD Firmware Update Tool onto a blank CD (CD-R or CD-RW).